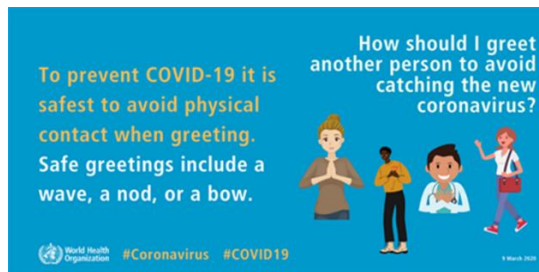




A guide to Responsible Social Distancing for all boaters



The following pages outline current guidelines and responsibilities of what boaters should **expect** and are required to **respect** when coming to the marine facility.

These guidelines have been put in place to protect the health and safety of our staff as well as all guests. They are subject to change and will remain in place as long as directed by our government, health care professionals and as deemed necessary by management. We encourage all boaters to regularly check government websites for current regulations.

Quick access to current zone restrictions here;
<https://covid-19.ontario.ca/zones-and-restrictions>

Following are the current provincial directives for gatherings;

Social gathering limits *					
Zone colour	Green	Yellow	Orange	Red	Grey
Indoors	50	50	50	5	0
Outdoors	100	100	100	25	10
*Indoors - Masks, screening and 6' distancing mandatory at all times in all zones					
*Outdoors - Social distancing mandatory, masks encouraged					

Our retail store

Retail store capacity limits *					
Zone colour	Green	Yellow	Orange	Red	Grey
Capacity	N/A			50%	25%
*Masks, screening and 6' distancing mandatory at all times in all zones					

Arrival

Parking areas

- Leave space between vehicles / park in every other spot where possible
- If two vehicles arrive at the same moment and park beside each other one vehicle / family waits in their vehicle while the first to arrive unloads and moves from their vehicle to their boat

Route from vehicle to boat

- Proceed directly to your boat fully respecting Social Distancing

Loading/Unloading

- Dock carts will not be available. Staff are currently unable to assist with loading/unloading of vehicles and boats. We suggest packing bags and bins accordingly
- Boats being dropped off for service should be uncoupled from owner's vehicle by the owner after advance arrangements for service work to be completed has been coordinated. Please call or email in advance

Launch

- Boat owners are not permitted to be present for launch unless using their own equipment ie. launching the boat yourself. If you are launching yourself, please move your vehicle to the parking area once boat is launched and move your boat off the launch ramp docks immediately to allow the next boater to use the facility.

Marina Life

Playgrounds, recreation / picnic areas, swimming pool / hot tub, laundry facilities

- All will follow local health unit guidelines for use. Full restrictions may be in place

Garbage & recycling

- Garbage and recycling facilities will be open daily as posted
- Additional containers have been distributed across the property.

Washrooms

- Boaters are encouraged to use onboard facilities as much as possible.
- **Private (single person) Washrooms** will be open as posted; they will be closed for cleaning frequently by staff
- **Shared (stall) Washrooms** will have limited stalls open as posted; they will be closed for cleaning frequently by staff

Showers

- Boaters are encouraged to use onboard facilities as much as possible.
- Limited shower facilities will be available as posted; showers will be closed for cleaning frequently by staff

Marina services

Access to any indoor facilities will require use of masks, screening and social distancing

Access to parts

- Store traffic will be limited to current capacity limits, and 6' physical distancing measures are always to be respected. For prompt service customers are encouraged to call ahead or email to discuss their needs and place their order prior to arrival. Safe 'curbside' pickup can be arranged.

Service & repairs

- For service and repairs, please call or email us with your inquiries and requests & we will be happy to accommodate your needs.
- Customers dropping boats off for service will be advised of where boats are to be left. After your departure, our staff will sanitize and move the boat to service area

Boat & Accessory Showrooms

- Accessory aisles, shelves & inventory will be regularly sanitized. Our teams will be available to discuss your needs – from a socially responsible distance and assist you with your purchases.
- Where possible virtual boat showings will be made available. We are more than happy to do a walkthrough of any boat while practicing safe social distancing. We will be limiting the number of people on the showroom floor and encourage boaters to please call ahead to book your personal showing.

Transactions

- E-transfers, online payments, and credit/debit cards will be accepted for payment.
- Our credit/debit machine will be regularly sanitized, please use Q tips if available to enter personal details
- We will be discouraging cash transactions at this time.

Fuel Dock

- As per the Technical Standards & Safety Authority (TSSA), only marina staff are permitted to fill a vessel and all non-staff must be off the boat before fueling can begin. Boaters are to move away from the boat to allow safe social distancing for our fuel dock attendants.
- We encourage you to allow our staff to fill your fuel tank when we launch. Please call or email the marina to discuss your needs.
- In season, please allow our Concierge Service to take care of your fueling needs prior to your arrival or after your departure; advanced notice will allow our staff to fuel your boat a couple days ahead of your visit.
- To limit the number of boats and therefore the number of people on the docks, only one boat at a time will be allowed at the fuel dock.

Pump out services

- Pump outs will still be available. Marina staff are to use their keys to remove and replace the waste cap and will be the only ones handling the pump out process, except for flushing water onboard. Our staff will be wearing personal protective equipment during the procedure.
- To limit the number of boats and therefore the number of people on a dock, we will only be allowing one boat per service dock.

On & around the docks

Food & drink

- All food and drink is to be consumed on your boat only. Eating or drinking on the marina property or anywhere on the docks will not be permitted.
- For tips & tricks for cooking onboard, please [click here](#).

Barbecues / Fire pits

- Boaters are encouraged to use onboard cooking facilities
- Barbecues will not be provided or permitted on shore.
- Fire pit areas will remain restricted to local guidelines

Social gatherings

- Gatherings are not to take place on the docks, walkways, shore or elsewhere on the marina property.
- All marina-sponsored events will be modified or postponed.

The summer of 2021 presents a wonderful opportunity to get off the docks, venture out onto the water, find a new bay, cove or fishing hole and enjoy your boat. Please be mindful while you are out there – rafting multiple boats together is not recommended.

The Boating Ontario directory contains a wealth of information on facilities and local activities. Please download the free app or see us in store if you would like a printed copy. Our staff are happy to help you plan your time on the water!



We look forward to serving you and your family and to safely continuing to take care of all your boating needs.

How to Social Distance on a Boat



Only boat with those in your immediate household - no guests!

Prearrange fueling & maintain distance at fuel and service docks



Keep your distance on the water - no rafting

Don't beach your boat right beside another boat



Have a great time on your boat & on the water - but do so safely!

Boating
Ontario